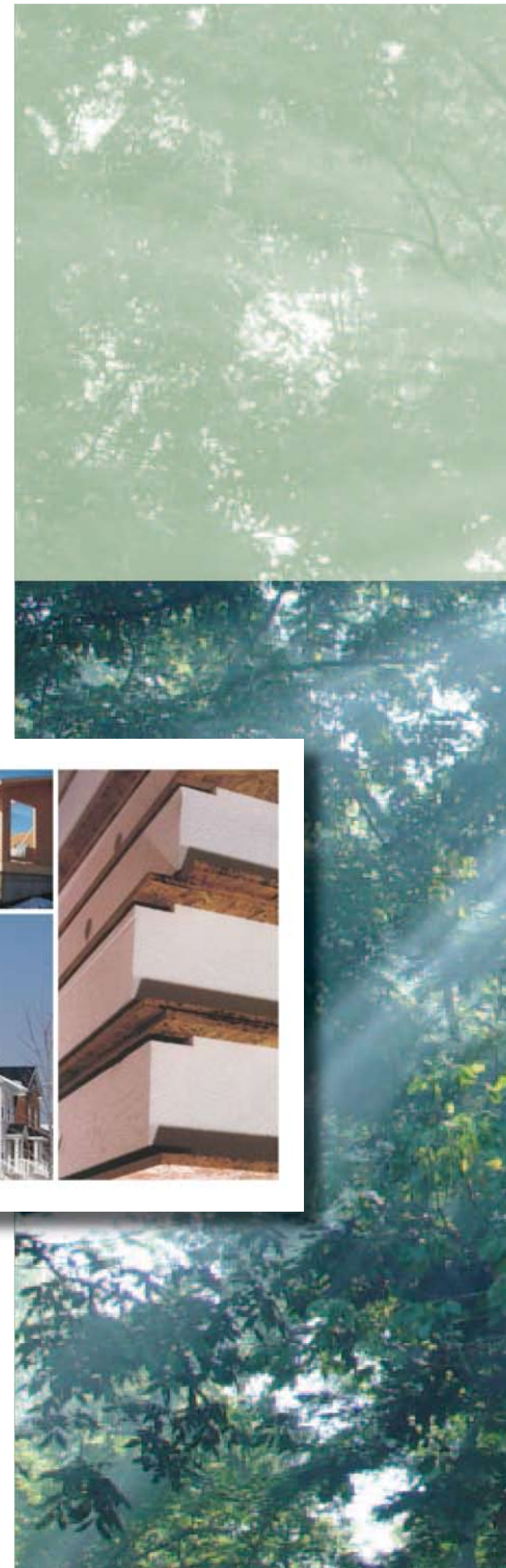


Greco Manufacturing, a leading manufacturer of structural insulated panel (SIP) laminating systems located in Minneapolis, Minnesota, and Extreme Panel Technologies, Inc., a leading manufacturer of structural insulated panels located in Cottonwood, Minnesota have recently teamed together combining over 50 years of experience in the SIP industry to provide companies with the latest in technology, laminating machinery and fabrication equipment available anywhere in the world.

Building Profits Together.



Midwest Group One LLC
2645 26th Avenue South
Minneapolis, Minnesota 55406 USA
tel. 612.721.5347
www.midwestgroupone.com



Technology, Know-How & Special Tool Package



Building Profits Together.



Structural Insulated Panels (SIP) Series



Marketing Kit



On-Site Construction Tools



Quality Control



Marketing Kit



On-Site Construction Tools



Quality Control



Architectural Plans



Education & Training

Panel Drawings



Greco Manufacturing,

a leading manufacturer of structural insulated panel (SIP) laminating systems located in Minneapolis, Minnesota, and

Extreme Panel Technologies,

a leading manufacturer of structural insulated panels located in Cottonwood, Minnesota have teamed together combining over 50 years

of experience in the SIP industry to provide the latest in technology, laminating machinery, and fabrication equipment available anywhere in the world for SIP residential and commercial building construction.

THE BENEFITS OF BUILDING WITH SIPs

- SIPs conserve natural resources
- SIPs provide healthier indoor living
- SIPs are environmentally friendly
- SIPs are energy-efficient
- SIPs are strong for lasting durability
- SIPs save construction time and money

Laminating Systems



Fabricating Tools & Equipment



Education & Training



Panel Drawings



Laminating Systems



Fabricating





Extreme Panel
Technologies, Inc.



Building Profits Together.

Greco Manufacturing and Extreme Panel Technologies have teamed together to offer everything a company needs to set up a completely integrated structural insulated panel (SIP) manufacturing factory including Technology & Know-How Packages, Consulting Services, Water Base & Liquid Polyurethane Laminating Systems, CNC Routers, Custom Fabrication Equipment, and Proprietary In-Plant and On-Site Construction Tool Packages.

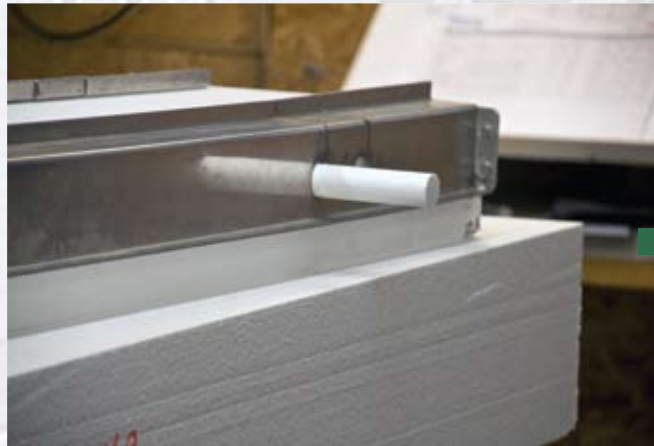
Expanded Polystyrene (EPS) Tool Package (Pre-Lamination)

EPS Cutting Tools & Templates



Package includes twenty-two (22) EPS cutting tools using electrical resistant heating elements, two (2) 10' cutting tools, two (2) 5' cutting tools, and a set of three (3) templates. Includes table, ventilation hood, and transformers.

Sideview with Template



EPS plug being removed from electrical chase.

Sideview with Template



Finished cut for electrical chase.

Edge Cutting Tool



Twenty-two (22) separate EPS edge cutting tools using electrical resistant heating elements for recessed cuts used in joining panels.

Horizontal Cutting Tool



5' Horizontal cutting tool with hoop-style handle using electrical resistant heating elements.
(shown with template for cutting electrical chases)

SIPs Done Right!

Longitudinal Cutting Tool



10' Longitudinal cutting tool with plastic handles using electrical resistant heating elements.
(shown with template for cutting electrical chases)

Panel Fabricating & Cutting Tool Package (Post-Lamination)

In-Plant Tool Package



Package Includes:

- Two (2) Stihl® electric chain saws with modified bases
- Five (5) "hogger-style" pneumatic cutting tools for EPS
- Two (2) 10'-long longitudinal cutting tools with electric resistant elements
- Two (2) 5'-long horizontal cutting tools with electric resistant elements
- One (1) 3'-long horizontal cutting tools with electric resistant elements
- Two (2) metal stands for banding
- One (1) steel banding tool
- Forty-plus (40+) miscellaneous hand tools



Stihl® Electric Chain Saw with Modified Base



Used for cutting doors, windows, gable ends, and miscellaneous openings.

Closeup Shot



Operator using special chain saw for cutting a finished panel.

EPS Cutting Tool



Used for recessing EPS in corners, and hard-to-reach places.

Closeup Shot



Shown in corner.

Pneumatic Cutting Tool



"Hogger-style" tool for cutting EPS recess.

Closeup Shot



Operator using "hogger-style" cutting tool for cutting recess in EPS.

Quality Control Equipment & Tools

Pull Test Stand-Before Separation



Pull test stand with hydraulic cylinder to measure internal bond strength of EPS and glue line.

Pull Test Stand-After Separation



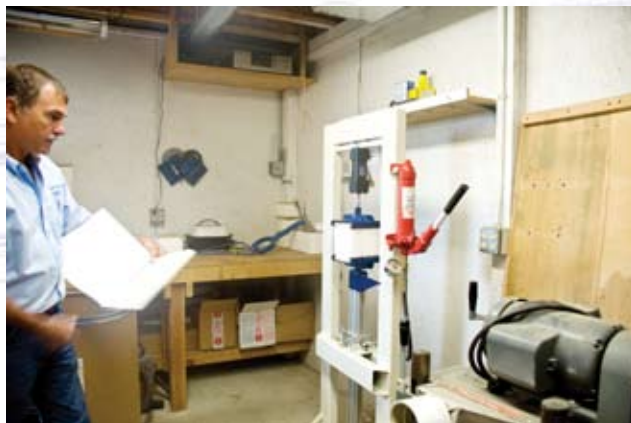
Pull test stand after EPS has separated.

Package Includes:

- Pull test stand for measuring the internal bond strength of the EPS
- Electronic scale for measuring coat weights
- Thermometer & humidity gauges
- Moisture tester for wood
- Two (2) infrared thermometers for measuring temperature of substrates with laser
- Tape measure calibration block



Pull Test Stand-Data Log



Lab technician recording internal bond strength.

Quality Control Data Log



Log book for recording historic data.

Custom Fabrication Equipment

Post Lamination Electrical Chase Drill



Other Optional Equipment:

- Straight line rip saw
- Panel saw for splines
- Dust collection system
- Water base adhesive management system for 2-component glues; includes mixing drill, paddle, buckets, digital scale & waste water disposal system

Other Optional Equipment:

- Vertical panel saw
- Table saw
- Box spline router with power feed
- EPS disposal system includes EPS pre-hopper, hammermill, blower with pipe & ground foam holding hopper

King Post Drill



Multi-head press for drilling king post holes.

On-Site Construction Tool Package

On-Site Construction Tools



Efficient on-site tools for panel installation and assembly.

Package Includes:

- One (1) Stihl® electric chain saw with modified base
- Safety chaps
- Two (2) 12" speed squares
- 7.25" circular saw
- Sawzall
- 12" compound miter saw
- Two (2) cordless drill drivers
- Two (2) air nailers
- Four (4) wall and roof lift plates
- Two (2) flat hook ratchet straps
- Two (2) strap-jack panel pullers
- Five (5) EPS recess cutting tools
- Foam gun
- Caulk gun
- Miscellaneous tools



SIP Laminating Systems

Acu-Track® Laminating Systems utilize a patented adhesive bead applicator that allows the product to flow through a moisture-free fluid handling system, under pressure, to the dispensing heads and nozzle assemblies.



The modular design allows panels of various widths to be laminated in one foot increments. Twenty four staggered nozzles per one-foot dispensing head ensures uniform adhesive application. A variety of vacuum presses can be incorporated into the system to hold the panels under pressure while the adhesive bond is achieved.



Machining Centers

The Panel Pro Series CNC Router from C.R. Onsrud is specifically designed for the SIP industry. This design saves valuable floor space, keeps the price down, allows for useful options (such as tool changers and multi-spindle drilling heads) and offers incredible throughput and productivity. C.R. Onsrud Machining Centers cut panels faster and more accurately - everything from window, doors, gable ends, and virtually any opening or angle, including compound miters with the addition of a fifth axis!



Typical Applications for SIP Construction

Photographs Courtesy of Structural Insulated Panels Association



Country Club



College Ecodorm



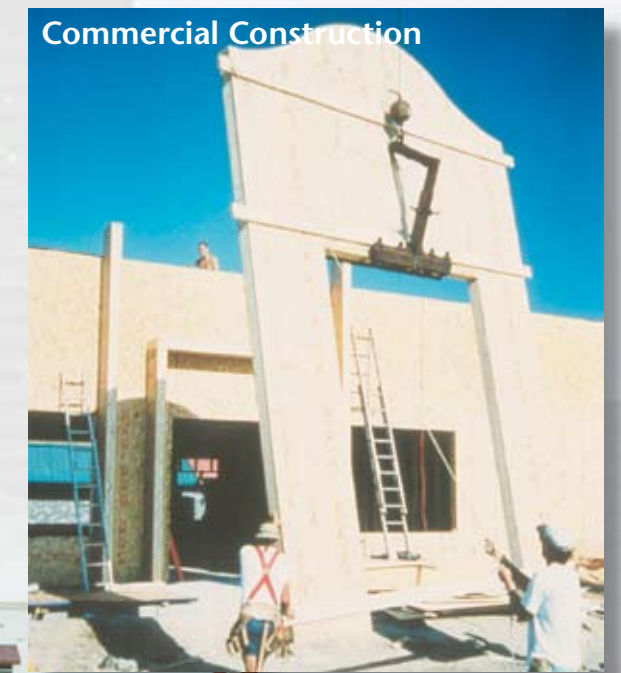
Horse Facility



Boy Scouts of America Council



Residential Construction



Commercial Construction

