

3D Laminating Presses



Innovative Products for Innovative People



Form Your Destiny.

Destiny™ Shuttle Press



Available in 4' x 8', 4' x 10' and 4' x 12' models.

The **Destiny™ Shuttle Press** provides a simple and affordable solution for your 3-dimensional laminating needs, while allowing you to control your own destiny. The press is capable of laminating a variety of decorative overlays including flexible and rigid vinyls, KYDEX® thermoplastic sheet, surf(x)®, and polystyrene to name a few.

Standard equipment includes an operator interface/PLC with color monitor, vacuum gauge, indicator light with buzzer, air gun, single shuttle and double roll unwind stand.

Infrared Heating



An infrared heating system provides consistent uniform heat using proprietary 375 watt "DuraLamp" heating elements rated at 10,000 hours, and a non-contact IR sensor to monitor actual film temperature throughout the cycle.

Proprietary Sealing System



An intermediate flange with a proprietary extruded silicone seal allows thermoforming with or without a membrane.

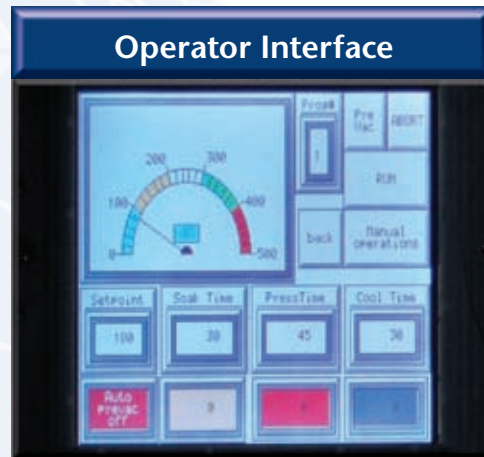
3D laminating made simple and affordable.

Optional Equipment

- Second shuttle
- EPDM and silicone membrane kits
- Minimizer kit
- Eco-jig pin system



Operator Interface



The operator interface/PLC with color monitor controls heating, soak, pressure and cooling parameters, with enough memory to store 20 programs.

Busch Vacuum Pump



Standard 2 HP Busch vacuum pump creates a nearly perfect vacuum of 14.2 psi at 29.6 in Hg.

Unwind Stand



A double roll unwind stand facilitates handling of heavy and cumbersome thermofoil rolls.

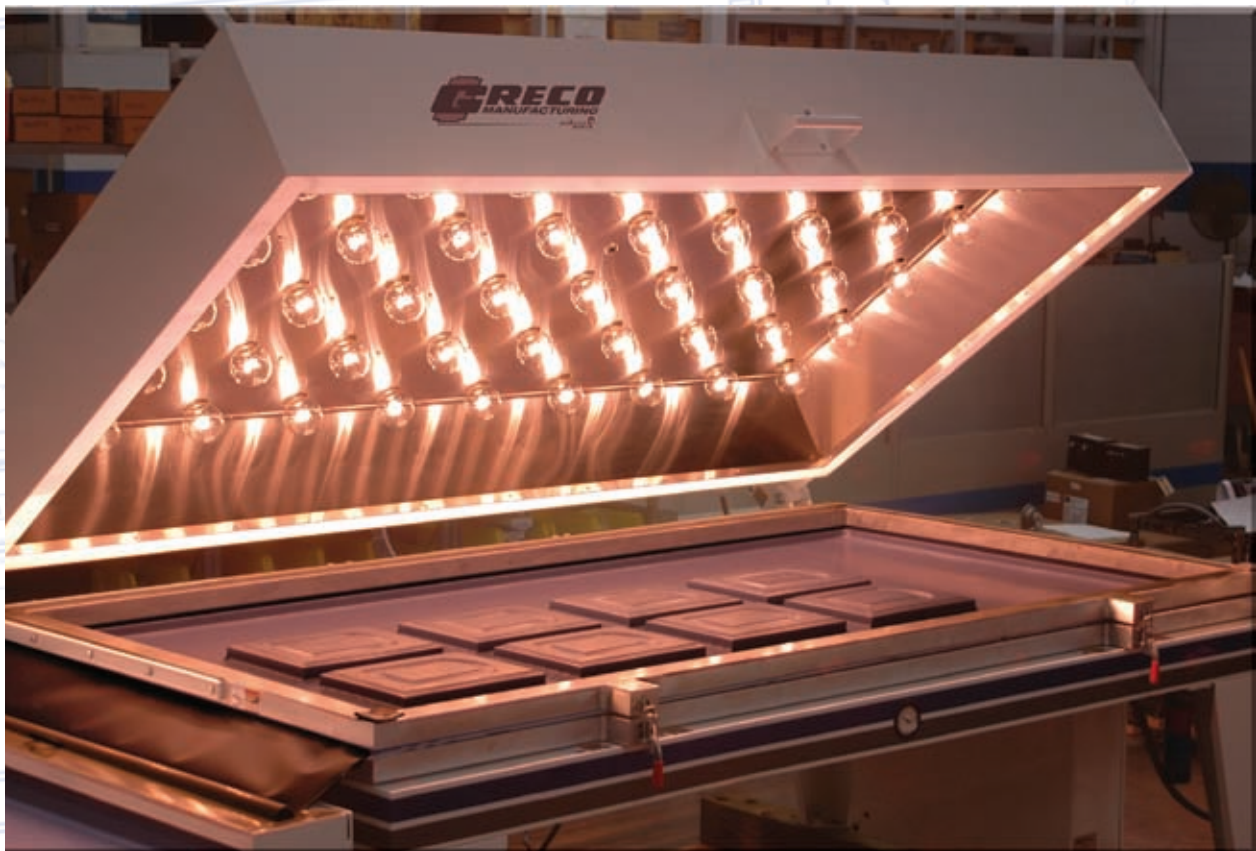
RS2 AND SOL. 3 & 4

Destiny™ Clam Shell Press



Available in 4' x 4' and 4' x 8' models.

The **Destiny™ Clam Shell Press** provides a simple and affordable solution for your 3-dimensional laminating needs, while allowing you to control your own destiny. The press is capable of laminating a variety of decorative overlays including flexible and rigid vinyls, KYDEX® thermoplastic sheet and polystyrene to name a few. Standard equipment includes an operator interface/PLC with color monitor, vacuum gauge, indicator light with buzzer, air gun, and double roll unwind stand. Note: VP404C includes single roll stand.



An infrared heating system provides consistent uniform heat using proprietary 375 watt "DuraLamp" heating elements rated at 10,000 hours, and a non-contact IR sensor to monitor actual film temperature throughout the cycle.

Optional second shuttle

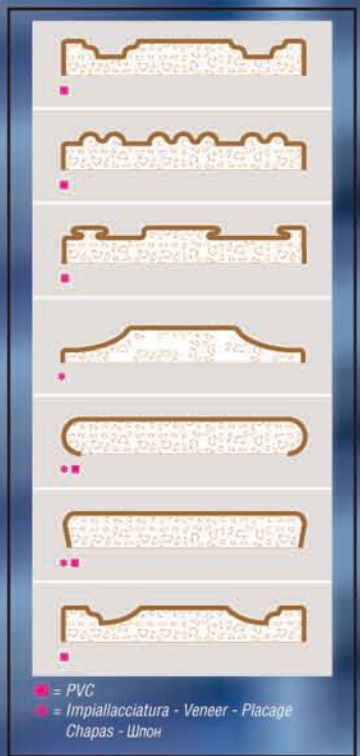


A standard single shuttle with intermediate flange improves productivity while allowing for easy loading and unloading of the press. An optional second shuttle can be added for increased production.

Typical Component Parts



AIR-SYSTEM ■ PM/CA/AIR



AIR-SYSTEM

Con 1 vassoio • With 1 tray • Avec 1 tables
 Con 1 bandeja • С 1 лотком



AIR-SYSTEM

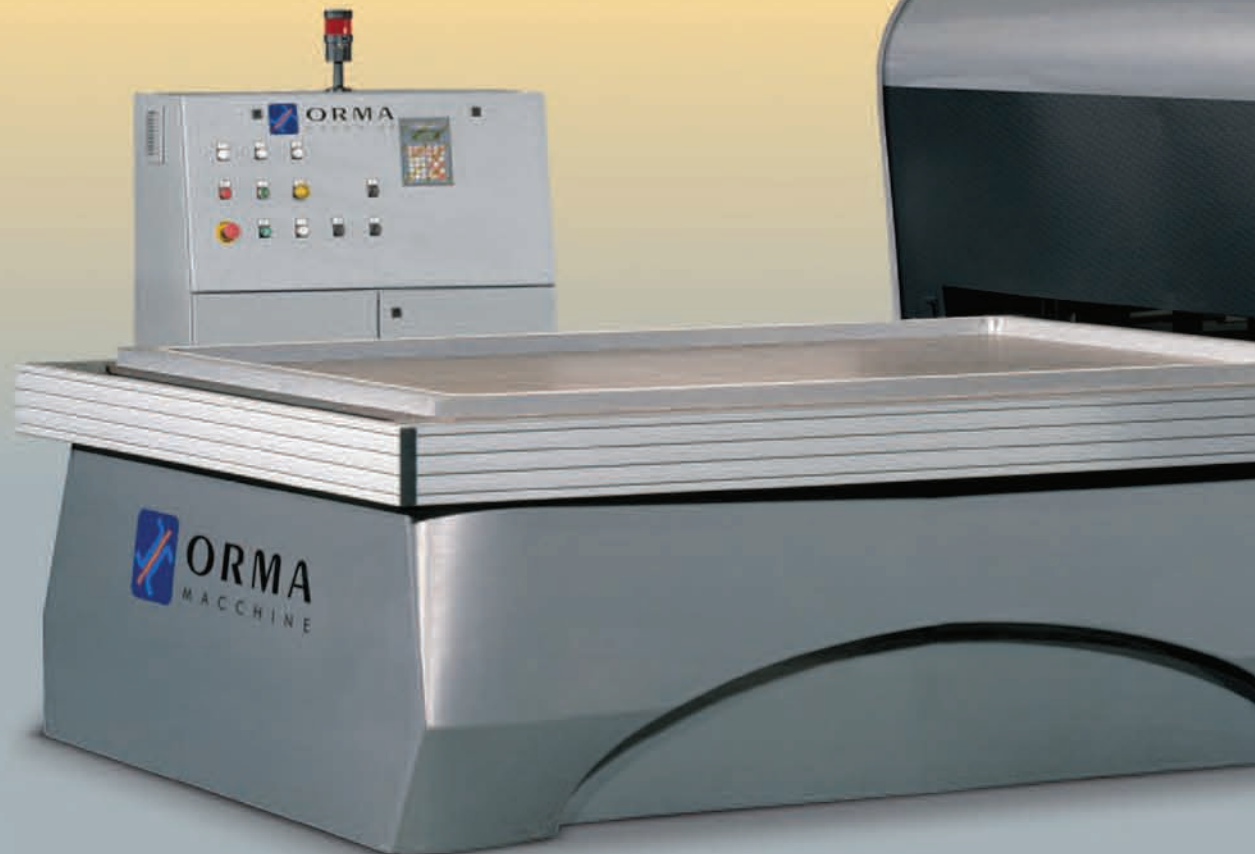
Con 2 vassoi (A richiesta) • With two trays (Upon request) • Avec 2 tables (Sur demande)
 Con 2 bandejas (A pedido) • С 2 лотками (по заказу)



PM/CA/AIR



When a component part includes more intricate detail, or requires underwraps, the **ORMA PM Air System** positive pressure press can handle the job. The 140 ton hydraulic locking chamber and drilled solid steel platen are manufactured to handle 70-85 PSI of laminating pressure across the face of the component. A special heating system allows operating temperatures up to 300° F for horizontal surface applications.





For more information on the complete line of ORMA presses,
contact your Midwest salesman at 612-721-5347 or online at
www.midwestgroupone.com.

Midwest Group One

2645 26th Avenue South

Minneapolis, MN 55406 USA

612.721.5347 voice

612.721.1736 fax

midwestgroupone.com

